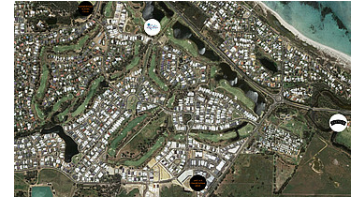




## Unit 4/9 Congressional Dve DUNSBOROUGH

**\$370,000 Sold as a Going Concern**



### SERVICE INDUSTRIAL UNIT - ENTERPRISE PARK

- \* 162sqm concrete tilt panel unit with frontage to Congressional Drive
- \* Double entry doors and separate full height roller door with easy direct street access
- \* Potential for mezzanine if required with City of Busselton approval
- \* Short/mid-term tenant in place with the property sold as a going concern
- \* Toilet and kitchenette to rear right hand side of unit

For information on current return and lease options please contact your Dunsborough Real Estate Agent Ben Jecks on 0408 545 304.

#### Features:

- Close To Schools
- Close To Shops
- Close To Transport
- SERVICE INDUSTRIAL UNIT - ENTERPR

#### Contact the agent



#### Ben Jecks

Ph: 08 9756 8800

Mob: 0408 545 304

ben@jmwrealestate.com.au